



NEW & IMPROVED FEATURES

Including Skypod Acute & SQ

skypod[®]

Eye-catching, affordable and easy to install
pitched PVC-U lantern roofs

eurocell[®]

All together better



skypod®

PITCHED PVC-U LANTERN ROOFS

There are lots of ways to add light to buildings, but none are as stylish as Skypod pitched PVC-U lantern roofs

Impress customers and end-users with desirable, space-enhancing lantern roofs

The Eurocell Skypod pitched lantern roof system enables you to create an eye-catching, contemporary feature that floods the interior of a property with natural light. It brings life and freshness to uninspiring flat-roofed buildings, and makes a stunning alternative to conventional conservatory roofs.

Skypod lantern roofs add height, light and volume to any living space. They are the perfect choice for a wide range of refurbishment, extension or new-build projects – including reception areas, classrooms, orangeries, kitchen-diners and garage conversions.

Affordable, energy efficient and attractive – the perfect alternative to aluminium

Eurocell designed Skypod as an affordable alternative to aluminium skylights, making it accessible for more applications, to more people. As well as value issues, the 'industrial' aesthetic of aluminium skylights is unsuited to many properties and not to everyone's taste.

Skypod offers significant energy-efficiency improvements, with a U-value as low as 1.0* – helping your customers to save on their energy bills. The PVC-U cappings also help homeowners to match the appearance of their lantern roof to existing PVC-U windows and doors.

WHY CHOOSE SKYPOD?



Designed for superior performance



Fast, accurate installation



U-values as low as 1.0*



20° or 35° fixed pitch



A choice of frame and glass colours



Cheaper than aluminium alternatives



Kits delivered in 4 working days[†]



10-year guarantee

The architectural design means there are no fussy crestings or finials to fit, giving your customers the ultimate in clean sight-lines. A unique ridge end cover cap completes the sleek appearance.

Create lantern roofs of any size, up to 2.75m × 8.7m

Skypod is available in a wide range of sizes, so you can create a lantern roof that's suitable for any project. With ten design options to choose from – including Skypod SQ and Skypod Acute – you can tailor Skypod to suit your customers' individual needs.

Simple, fast installation – for a quality-assured finish on every job

Crucially, Skypod has been designed for fast, accurate, simple installation. It requires only square cuts, with no mitring or awkward angles to negotiate, and all screw holes are pre-drilled. This enables installers to give

customers a precision-fitted watertight lantern roof, while making the job as quick and easy as possible.

Delivered in four working days

Once the site has been surveyed and measurements taken, you can order your bespoke Skypod roof from any of the 195+ Eurocell branches across the UK. Your complete ready-to-install kit, including all screws and fixings, will be delivered to the branch in 4 working days[†]. You can then either collect it yourself or arrange free delivery direct to your site^{**}.

Complete the job

All the tools and sealants you need to install your lantern roof to the highest standard are available from your local Eurocell branch, so you can pick up everything you need when you collect your Skypod. It's important to use a sealant that is compatible with self-cleaning glass, and we recommend Soudal SMX 506.

* Standard U-value is 1.2. U-value is applicable to glass only.

** Free delivery applies to orders over £50 and deliveries to mainland UK only, excluding Northern Scotland.

[†] 5 days for branch customers.



MORE FLEXIBILITY

TEN LANTERN ROOF STYLES ARE NOW AVAILABLE

No side rafter bars

With the fewest possible number of slimline bars needed to create uninterrupted glazed surfaces of up to 1.5m x 2.75m, Skypod with no side rafter bars is the cleanest, simplest way to introduce overhead natural light into any room space. It offers a practically unobstructed window on the world above and, come rain or shine, keeps homeowners warm and comfortable thanks to its temperature controlling glass and high levels of energy efficiency.

With side rafter bars

By introducing additional bars to the standard Skypod design, side rafter bars extend the possibilities for fully glazed rooflights to spans of up to 1.5m wide x 7.45m long. The result is a dazzling feature roof that turns what could so easily be an underwhelming flat roof extension into a year round living space with all the natural light and lofted headroom your customers could ever wish for.



Skypod with no side rafter bars

Three-bar gable

The extra strength and rigidity of our 3-bar Skypod option not only allows you to install even longer, even wider vaulted rooflights into your customers' homes. It also gives a much more traditional 'orangery' style look to their rooflight, with the introduction of classically proportioned end panels in a spacious vaulted glass ceiling up 2.75m wide × 8.7m long in size.

Skypod SQ

The alternative to a single span rectangular rooflight, Skypod SQ is the square lantern roof that offers perfectly balanced sightlines and, thanks to its simple 4-hip design, higher levels of natural light than conventional designs of the same surface area. Because Skypod SQ can be produced in sizes right down to 0.5m × 0.5m, it means even the smallest flat roofed space in the home can benefit from day long natural light.



With this 3-bar gable design, you can create larger lantern roofs

skypod^{SQ}

Now you can give your customers a square lantern roof – with symmetrical looks!



THERMALLY BROKEN
RIDGE

1.0*
U-VALUE

THERMALLY BROKEN
RING BEAM

NEW

SLEEK
DESIGN

ARCHITECTURAL
COLOURS

skypod®

EXCEPTIONAL STYLE & PERFORMANCE

New and improved

The Eurocell Skypod pitched lantern roof system has had further enhancements with the introduction of a more discreet internal boss, purpose designed and secure fix external rafter end caps and a thermally broken ring beam to create a virtually condensation free finish.

Colours to frame the view

Like all Eurocell PVC-U products, Skypod comes with an exact colour-match guarantee. That means the colour is precisely matched to all Eurocell window, door and conservatory roof products, creating a co-ordinated, consistent look across any property.

Skypod has a white internal finish as standard, to maintain a bright, fresh interior. A range of external colours is available to complement existing architectural style, as well as a choice of glass options.

Ten-year guarantee

Skypod lantern roofs are guaranteed for ten years. That means you can give your customers the assurance of a robust, well-designed, precision-made product that's built to last – manufactured by the UK's leading PVC-U specialist.

UNIQUE

SPIDER BAR GLAZING CAP



PURPOSE DESIGNED
RAFTER END CAPS

NEW

FIXED **20°**
OR
35° PITCH

FRAME COLOURS

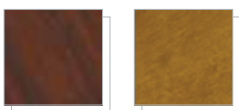


WHITE
White interior

ANTHRACITE GREY
White interior

ANTHRACITE GREY*
Anthracite interior

MOONDUST GREY
White interior



ROSEWOOD
White interior

GOLDEN OAK
White interior

GLASS COLOURS



BLUE **NEUTRAL** **BRONZE**



AQUA **CLEAR**

ADDITIONAL COLOURS AND SPECIFICATIONS ARE MADE TO ORDER ON EXTENDED LEAD TIMES

* Anthracite Grey/Anthracite Grey not available for Skypod Acute



skypod^{ACUTE}

EXCEPTIONAL STYLE & PERFORMANCE

skypod^{ACUTE}

A new angle on the lantern roof

Homeowners love Skypod lantern roofs for all the extra light and space they bring into the home.

Great if they've got a flat roof big enough to take a full lantern. But what about all those people with smaller extensions and outhouses crying out for a little natural light?

Well, now you can give them exactly what they want with Skypod Acute.

35°
skypod^{ACUTE}

35°
skypod^{SQ}
ACUTE

Pitch for more projects

Skypod Acute is a new Skypod design, with a 35° pitch instead of the usual 20°. That means it can be fabricated in much smaller sizes (right down to 0.5m x 0.5m) and fitted to a much smaller roof without losing out on light levels.

The quick, easy, quality fix

Just like the rest of the Skypod range, Skypod Acute is designed with installers in mind.

Everything you need is right there in the pack, right down to the last support stud and sealing plate. Even the screw holes are predrilled for a quick installation that's right first time, every time.

More colours to co-ordinate

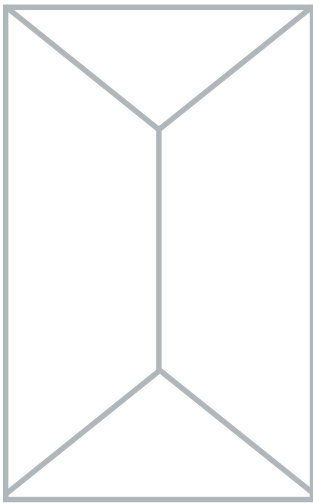
If you're fitting windows and doors in one of the thirty or more alternatives to plain white available from Eurocell, you'll be glad to hear Skypod Acute can be ordered to match every one of them.

Together, they'll make any home look fantastic from the kerbside. And make you look even better in the eyes of your customers.

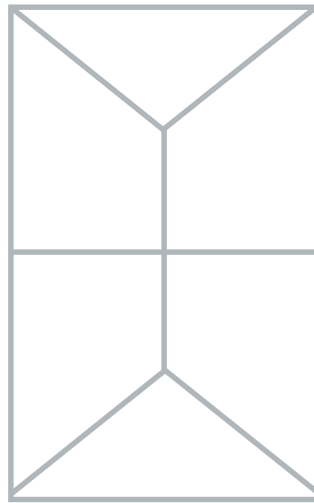
For more information and technical advice on Skypod Acute, call our friendly Customer Service Team on **0800 988 3047**.



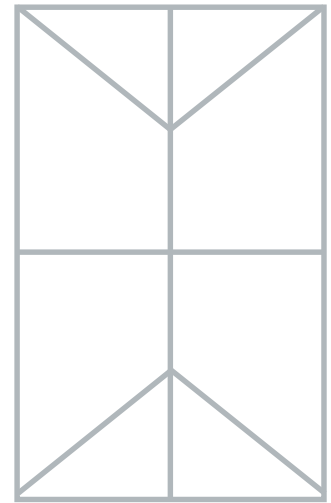
All available in 20° or 35° fixed pitch



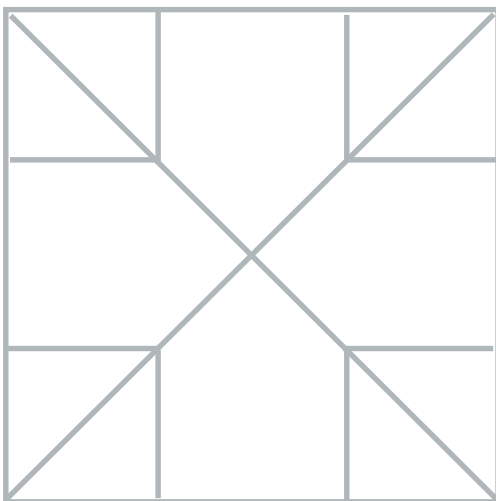
No 'side-bars' needed on sizes up to 1.5m x 2.75m



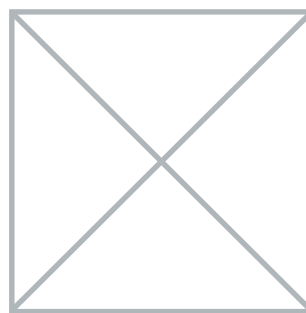
Up to 1.5m x 7.45m



Up to 2.75m x 8.7m



skypod^{SQ}
Up to 2.75m x 2.75m



skypod^{SQ}
Up to 1.5m x 1.5m



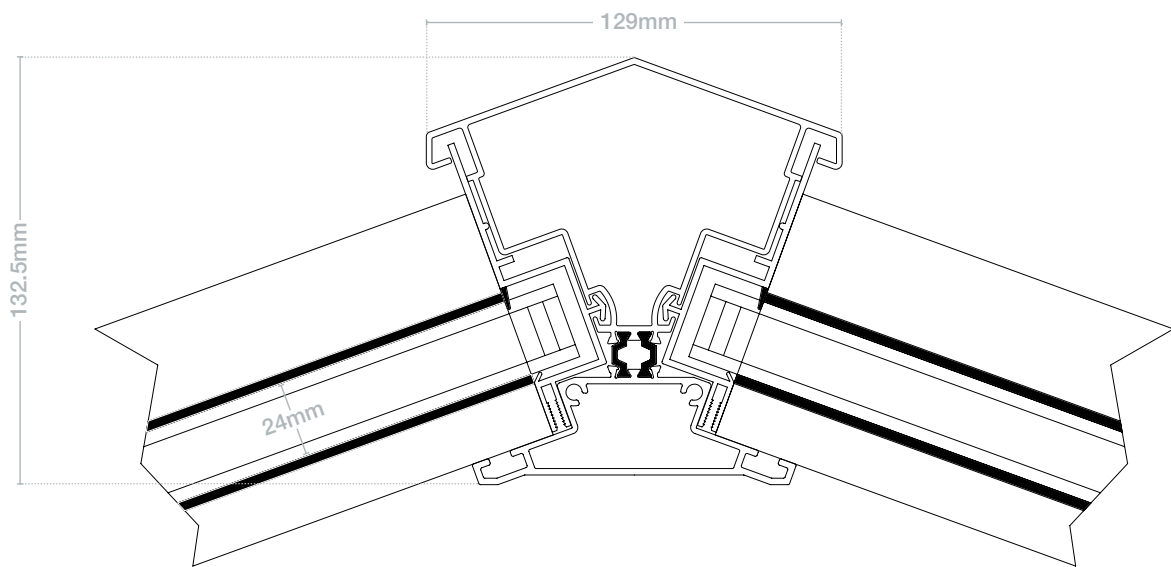
skypod^{ACUTE}

Note: Design will vary dependent on size. All Skypod lantern roofs are made-to-order, and you will receive a design to sign-off before the item goes into production.

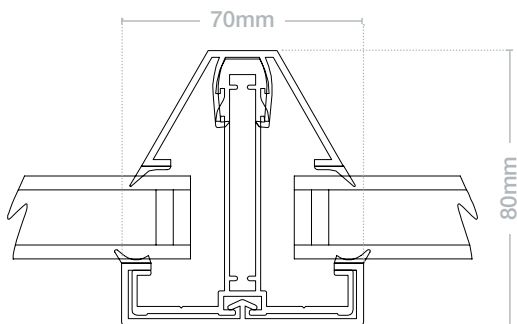
ASSEMBLIES

Ridge assembly

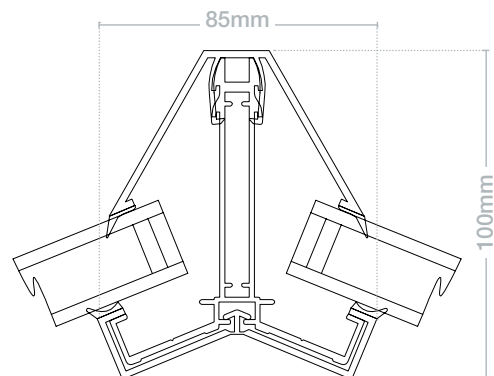
Powder-coated aluminium, thermally broken



Rafter assembly



Hip assembly



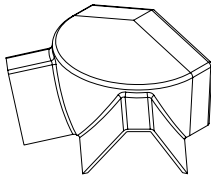
INSTALLATION

To see an in-depth installation guide, please contact the Customer Care Team on **0333 988 3047**

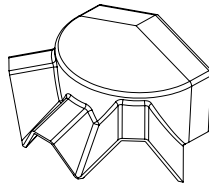
TECHNICAL INFORMATION

SKYPOD PITCHED LANTERN ROOFS

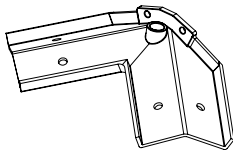
COMPONENTS



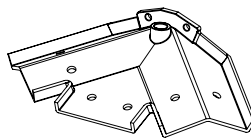
CRS 9241
skypod
2-bar top cap



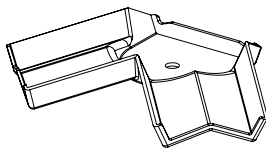
CRS 9240
skypod
3-bar top cap



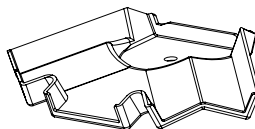
CRS 9522A
skypod
2-bar spider bracket



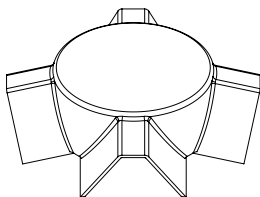
CRS 9521A
skypod
3-bar spider bracket



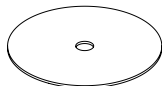
CRS 9249
skypod
2-bar bottom cap



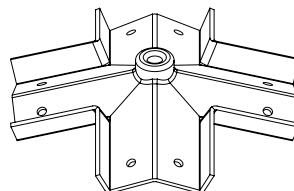
CRS 9248
skypod
3-bar bottom cap



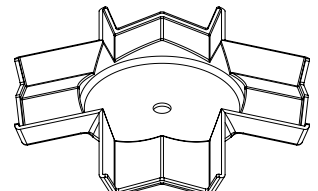
CRS 9242
skypod^{SQ}
Top cap



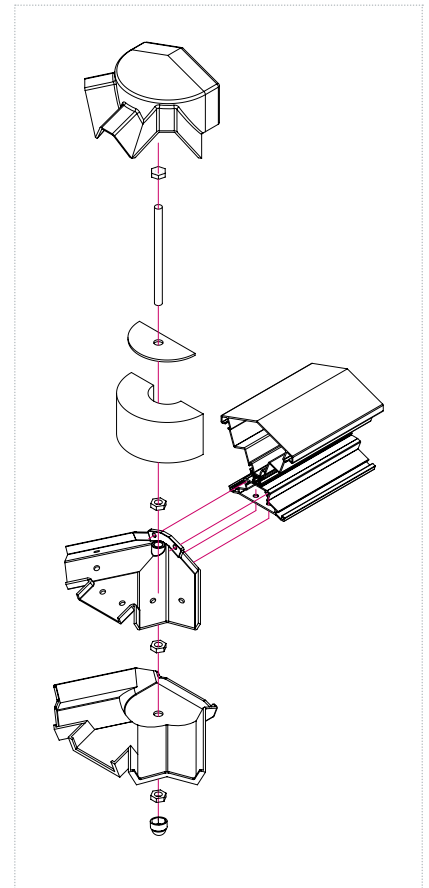
CRS 9423
skypod^{SQ}
Foam bung sealing plate

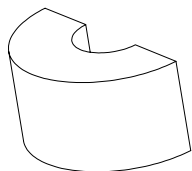


CRS 9523A
skypod^{SQ}
Spider bracket



CRS 9250
skypod^{SQ}
Bottom cap

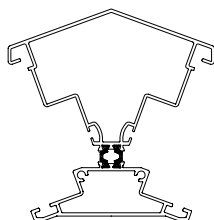




CRS 9421
skypod
Foam bung



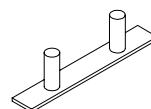
CRS 9422A
skypod
Foam bung sealing plate



CRS 9520A
skypod
ridge body



CRS 8625
Single variable
support stud

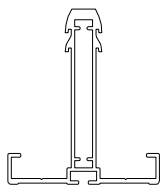


CRS 8624
Double variable
support stud

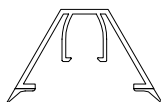


NEW

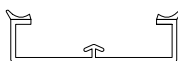
CRS 9200
skypod
screw cap covers



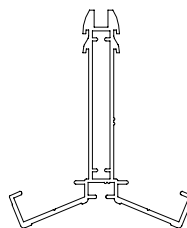
CRS 8501A
Standard rafter



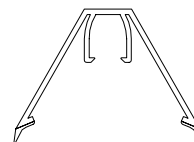
CRS 8016
25mm
rafter top cap



CRS 8011
Rafter bottom cap



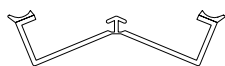
CRS 8502A
Edwardian hip



CRS 8017
25mm Edwardian
hip top cap



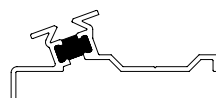
CRS 8053
Eaves beam seal



CRS 8012
Hip bottom cap

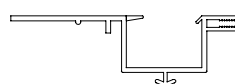


CRS 9550A
skypod
Eaves 20°

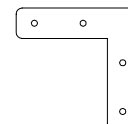


NEW

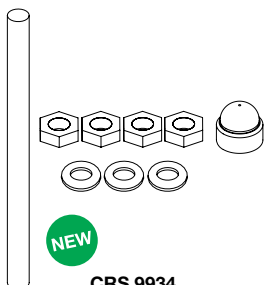
CRS 9552A
skypod
Thermally broken eaves beam



CRS 8024
24/25mm ridge
glazing trim

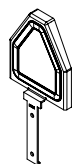


CRS 8654
90° eaves
beam cleat

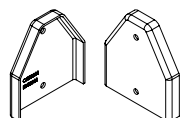


NEW

CRS 9934
skypod
Boss kit

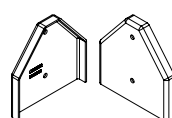


CRS 8201
Rafter / hip end cap



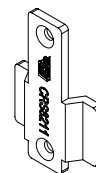
NEW

CRS 9201
skypod
Rafter end cap

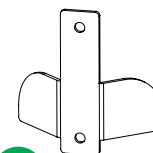


NEW

CRS 9202
skypod
Hip rafter end cap



CRS 8211
Glazing stop
(CRS 8682 Glazing
stop screws)



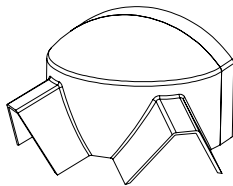
NEW

CRS 9611S
Stainless steel glazing stop
(CRS 8682 Glazing
stop screws)

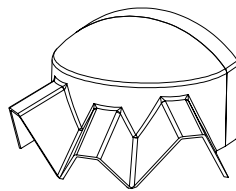
TECHNICAL INFORMATION

skypod^{ACUTE} PITCHED LANTERN ROOFS

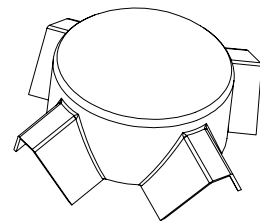
COMPONENTS



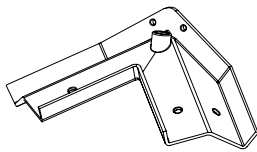
CRS 9244
skypod^{ACUTE}
2 bar top cap



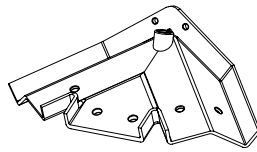
CRS 9243
skypod^{ACUTE}
3 bar top cap



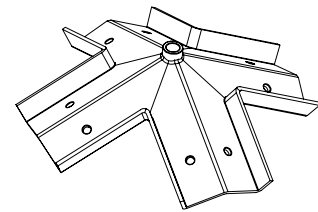
CRS 9245
skypod^{ACUTE}
Gazebo top Cap



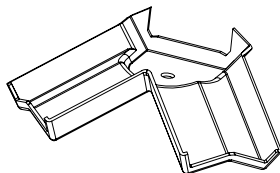
CRS 9525A
skypod^{ACUTE}
2 bar spider bracket



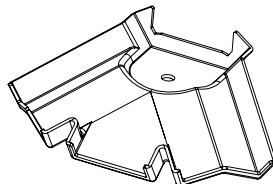
CRS 9524A
skypod^{ACUTE}
3 bar spider bracket



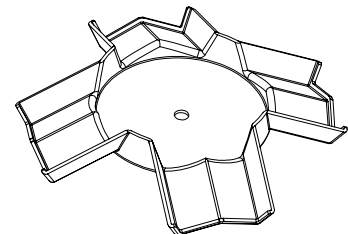
CRS 9526A
skypod^{ACUTE}
Gazebo spider bracket



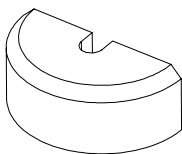
CRS 9252
skypod^{ACUTE}
2 bar bottom cap



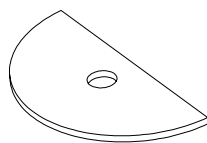
CRS 9251
skypod^{ACUTE}
3 bar bottom cap



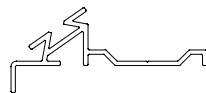
CR 9253
skypod^{ACUTE}
Gazebo bottom Cap



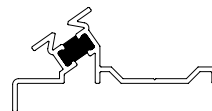
CR 9424
skypod^{ACUTE}
Foam bung



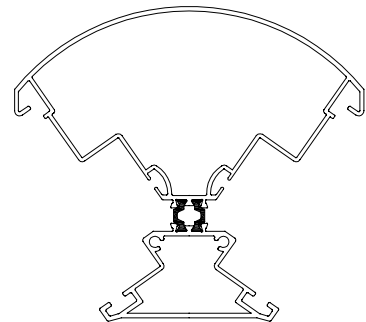
CRS 9425A
skypod^{ACUTE}
Foam bung sealing plate



CRS 9551A
skypod^{ACUTE}
Acute Ring Beam



CRS 9553A
skypod^{ACUTE}
Thermally broken ring beam



CRS 9530A
skypod^{ACUTE}
Acute ridge body



CASE STUDY

SKYPOD TRANSFORMS FLAT-ROOF EXTENSION

When builder Colin Clarkson visited his local Eurocell branch in Wakefield to get a price on some roof tiles, he did not expect to end up renovating his new home from top to bottom in products from one single source. Yet now his upgraded bungalow features Eurocell-sourced products throughout – from Tapco composite slate tiles to Skypod lantern roofs, a Dales Collection composite door, PVC-U windows and even the rainwater goods.

The building itself was an early 1960s two-bedroom brick and block bungalow with a conservatory extension and was in a state of disrepair. Colin saw its potential and bought it to convert into a three-bedroom home with pitched dormers and a flat-roofed extension that matched the best of contemporary design and living standards.

“I first went to Eurocell because it was one of the few suppliers of Tapco composite roof slates and they were well priced, yet then when I saw the Skypod lantern roofs I wanted them. I had a conservatory before and knew this would sort the problem of freezing in winter and boiling in summer. And it all grew from there.”

Supplied with a 10-year guarantee, Skypod lantern roofs are swiftly installed and bring the benefits of extra light and height without the penalty in conservatory heating costs as the double-glazed lantern roof has a U-value of 1.0. A wide range of frame and glass options complement any home while self-cleaning, temperature controlled glass keeps maintenance to a minimum. Available in a choice of designs, Skypod can be manufactured to fit any space with sizes up to 2.75m x 8.7m.

“When I saw the Skypod lantern roofs I wanted them. I had a conservatory before and knew this would sort the problem of freezing in winter and boiling in summer.”

Colin Clarkson
Builder



All together better

For more information about **skypod**® pitched PVC-U lantern roofs from Eurocell, call our customer services team on **0800 988 3047**, or visit **eurocell.co.uk/skypod**

Eurocell plc, Fairbrook House, Clover Nook Road, Alfreton, Derbyshire DE55 4RF



eurocell.co.uk